



LOCK UP WITH LOCKWOOD



8800 Series

Floor Closers

- 2, 3 and 4 Power Strength
- Non Hold Open
- 90° & 105° Hold Open
- Adjustable Pivot Inserts
- Pivot Door Sets
- Lockwood Guaranteed

Lockwood 8800 Series Floor Closers

The Lockwood 8800 Series Floor Closers are designed to provide door control on manually operated double action doors in a wide range of commercial applications. The mounting kit provided with the Lockwood 8800 Series will suit glass, timber and aluminium frame door construction as standard.

Specification

Door Width

Up to 1150 mm (refer to selection procedure).

Door Weight

Up to 120 kg as standard.

Door Thickness

Minimum for timber 32 mm.

Door Control

Two independent adjustment valves provide full hydraulic control from 130° to 15° of closing and 15° to 0° of latching.

Door Frame Type

Timber/aluminium/steel.

Non Hold Open & Hold Open Versions

Available in both Non Hold Open & Hold Open versions
Mechanical Hold Open 90° and 105° in separate units.

Door Adjustment

The Lockwood 8800 is positionally adjustable for a height of 4 mm, a width of 10 mm, a length of 9 mm.

Cover Plate Finishes

Stainless Steel	(SSS)	Gold	(GLD)
Polished Stainless Steel	(PSS)	Other finishes on application	



Additional Features

- Interchangeable extended pivot inserts ranging from +5 mm to +35 mm. This range will accommodate applications such as threshold, carpeted floors or situations where additional clearance between the door & floor are required (see page 4).
- Universal off set pivot sets for flush closing single action door applications (SP844-30).

Pivot Door Sets

- Suitable for door applications where a free swing pivot door is required. Consists of retractable top pivot set with heavy duty bottom pivot and strap. Suitable for aluminium, glass and timber doors.

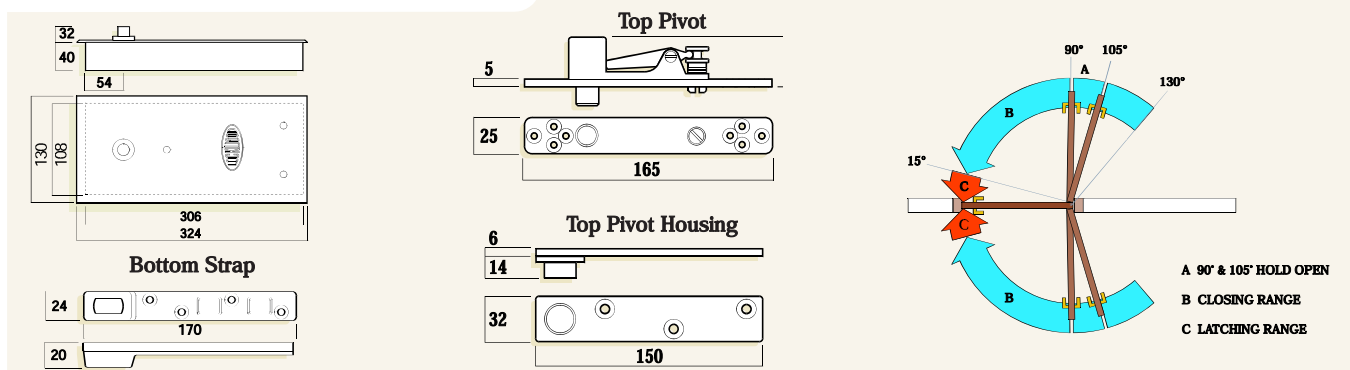
Specification Service

For hardware specification assistance refer to your local ASSA ABLOY sales office or authorised agent. A comprehensive obligation free door hardware specification can be prepared by our Hardware Representatives.

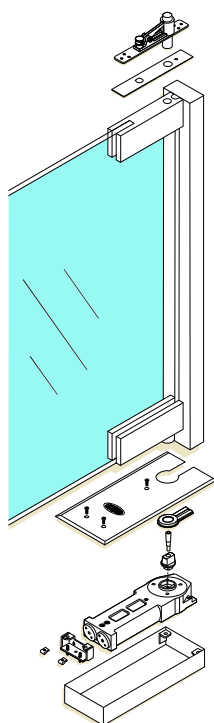
Size Selection Chart

Spring Size	Door Width	Max Door Weight	Closing Torque
2	850 mm	120 kgs	20 Nm
3	950 mm	120 kgs	27 Nm
4	1100 mm	120 kgs	39 Nm

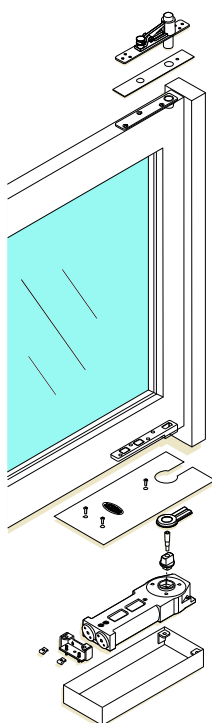
Limiting Dimensions



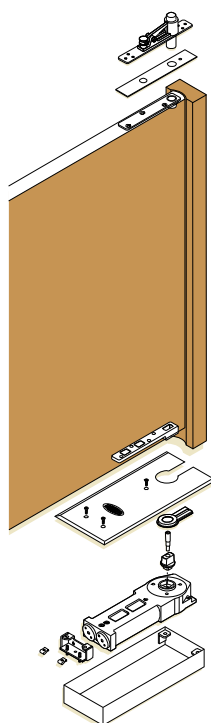
Typical Applications



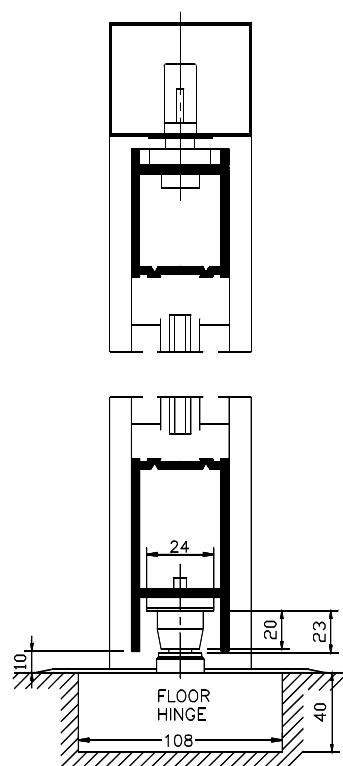
Glass Door Application



Aluminium Door Application



Timber Door Application



8800 Series Product Range

Non Hold Open

8842NSSS

Size 2 Standard Floor Spring Non Hold Open.

8843NSSS

Size 3 Standard Floor Spring Non Hold Open.

8844NSSS

Size 4 Standard Floor Spring Non Hold Open.

90° Hold Open

8842H90SSS

Size 2 Standard Floor Spring 90° Hold Open.

8843H90SSS

Size 3 Standard Floor Spring 90° Hold Open.

8844H90SSS

Size 4 Standard Floor Spring 90° Hold Open.

105° Hold Open

8842H105SSS

Size 2 Standard Floor Spring 105° Hold Open.

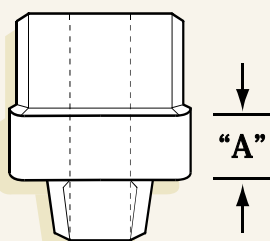
8843H105SSS

Size 3 Standard Floor Spring 105° Hold Open.

8844H105SSS

Size 4 Standard Floor Spring 105° Hold Open.

Extended Spindle Range



Standard

Part
Number

SP884
-60-5

SP884
-60-10

SP884
-60-15

SP884
-60-20

SP884
-60-25

SP884
-60-30

"A"

+5 mm

+10 mm

+15 mm

+20 mm

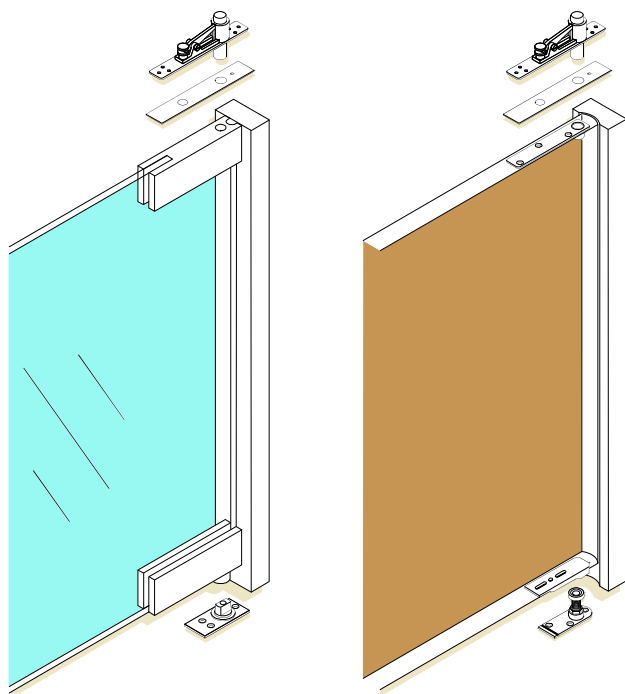
+25 mm

+30 mm

Pivot Sets

Pivot Door Sets

Suitable for door applications where a free swing pivot door is required. Consists of retractable top pivot set with heavy duty bottom pivot and strap. Suitable for Aluminium, Timber and Glass Doors.



Typical Glass Door
Installation

Typical Aluminium
or Timber Door Installation

Pivot Door Sets

985-300SSS

Aluminium/Timber Door

985-350SSS

Glass Door

Door Pivot for Glass Doors

SP985-35

Heavy Duty Pivot.

Heavy Duty Bottom Pivot (200 kgs)

SP985-35

Heavy Duty Pivot.

985-30

Bottom Strap.

Visit us at: assaabloyasiapacific.com

ASSA ABLOY Sales Offices & Authorised Agents in Asia Pacific

Victoria – Head Office

Telephone (03) 8574 3888
Facsimile (03) 8574 3788

Queensland South

Telephone (07) 3373 5200
Facsimile (07) 3373 5256

Queensland North

Telephone (07) 4779 0177
Facsimile (07) 4775 1480

NSW – Commercial

Telephone (02) 8543 3700
Facsimile (02) 9531 7944

NSW – Residential

Telephone (02) 9620 9111
Facsimile (02) 9620 9055

Abloy Security

Telephone (02) 9882 6066

South Australia

Telephone (08) 8364 1930
Facsimile (08) 8364 1931

Western Australia

Telephone (08) 9227 9588
Facsimile (08) 9227 8913

Tasmania

Telephone (03) 6223 5404
Facsimile (03) 6224 0435

Christchurch

Telephone (03) 379 4810
Facsimile (03) 379 4819

Export Department

Telephone
+61 (0)3 8574 3888
Facsimile
+61 (0)3 8574 3789

Asian Offices

ASSA ABLOY – Malaysia
ASSA ABLOY – Singapore
ASSA ABLOY – Thailand
ASSA ABLOY – Hong Kong
ASSA ABLOY – Shanghai
ASSA ABLOY – Beijing
ASSA ABLOY – Korea

Contact the Export Department,
Australia for details.



ASSA ABLOY

Lockwood Guarantee

ASSA ABLOY Australia Pty Limited ("ASSA ABLOY") guarantees its Lockwood products against defects in workmanship and materials. If within the normal working life of a product it is found to be defective, ASSA ABLOY will supply the same or equivalent product free of charge. All electrical and electronic components used in ASSA ABLOY's range of products excluding batteries are guaranteed for a period of 12 months from the date of proof of purchase, unless stated otherwise.

ASSA ABLOY assumes no liability under the guarantee for the following:

1. Improper installation or failure to follow fitting instructions.
2. Failure due to improper maintenance.
3. Failure due to fair wear and tear.
4. Indirect or consequential loss or damage.
5. Cost of removal and/or replacement.

6. Cost of freight and/or travelling time.
 7. The plated finishes Florentine Bronze, Architectural Bronze, Polished Brass, Gold and Satin Brass, "which" are classified as soft finishes. As deterioration is possible under some environmental conditions, these finishes are excluded from this guarantee.
 8. Any modification or repairs to a product, as supplied, unless authorised by ASSA ABLOY Australia Pty Limited.
 9. Use of replacement parts other than authorised parts.
 10. Malfunction or failure of the product due to the use of non-genuine Lockwood parts.
 11. Malfunction or failure of the product due to the use of non-specified batteries.
- Nothing in the ASSA ABLOY Australia Pty Limited guarantee excludes, restricts or modifies any condition, warranty, right or liability implied or protected by law where to do so would render the Guarantee, or any part of it, void.